



SMDC

Every single day, SM touches the lives of millions of people through its stores, malls, banks, hotels and leisure facilities. And now, Filipinos can live in style, comfort and convenience at SM Development Corporation (SMDC).

SMDC commits itself to provide access to luxurious urban living through vertical villages perfectly integrated with a commercial retail environment, giving its residents a truly cosmopolitan lifestyle.

SMDC developments are strategically situated in key areas across Metro Manila specifically the Central Business Districts of Mall of Asia Complex, Makati, Ortigas, Taguig, Quezon City, Pasay, Parañaque, Mandaluyong and Las Piñas.

They can also be easily accessed from neighboring provinces like Cavite, Bulacan and Pampanga.

bloom
RESIDENCES
SUCAT, PARAÑAQUE

HLURB TLS NO. ENCRFO-17-10-023
Dr. A. Santos Avenue, Brgy. San Antonio, Sucat, Parañaque City
Completion Date: May 2022
Developer: SM Development Corporation

Come Into Bloom

Blossom and flourish in this newest bud, south of the Metro - Bloom Residences in Parañaque! SMDC Bloom Residences provides a haven for urbanites and young families that would want to stay active and healthy through a multitude of recreational amenities. Residents can enjoy a dynamic lifestyle all year round!



Convenience & Accessibility at the Root

Bloom Residences stems out to easily reach different CBDs and entertainment hubs. Located at the foot of Sucat Skyway Exit and just 50m away from Sucat Toll Exit, Bloom Residences makes it easy for you to go in and out of the area.

▲ NAIA

▲ MAKATI

bloom
RESIDENCES
SUCAT, PARANAQUE



MEDICAL CENTER
PARAÑAQUE
(1.2km)



CITY
BF PARAÑAQUE
(1.4km)

SUCAT ROAD

SKYWAY ENTRANCE/EXT

SLEX

▼ ALABANG

Nearby Malls

SM City BF / SM City Sucat / SM Hypermarket
Shopwise/Puregold/Uniwid Warehouse
and Santana Grove

Major CBDs

Alabang/BGC/MOA/Makati

Educational Institutions
Places of Worship
Health Institutions








HYPERMARKET
(6.7km)

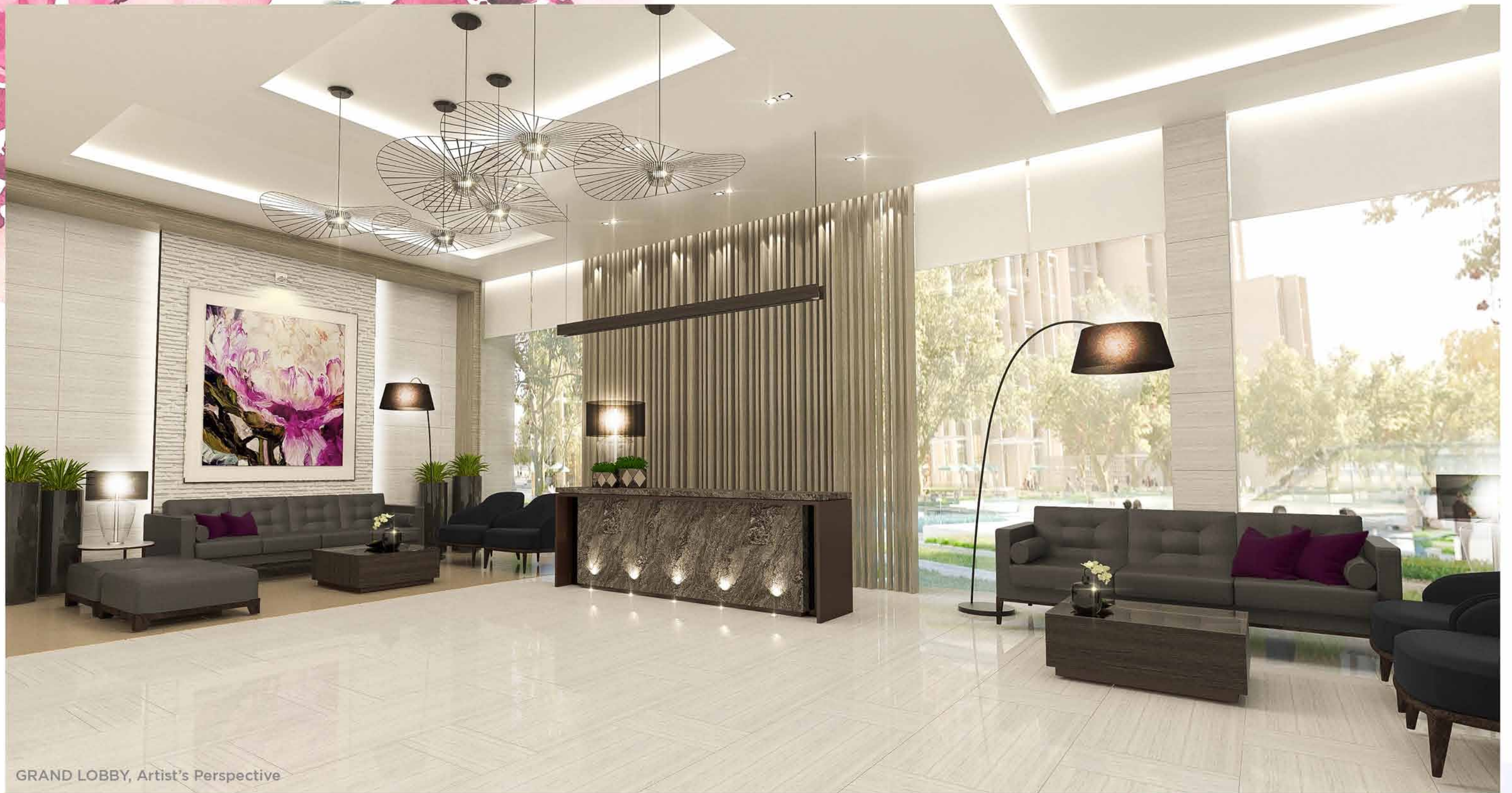


Site Development Plan

Thriving Integrated Lifestyle Hub

In this verdant, worry-free community where residential and commercial interests entwine, at Bloom Residences, everything your family needs are within reach.

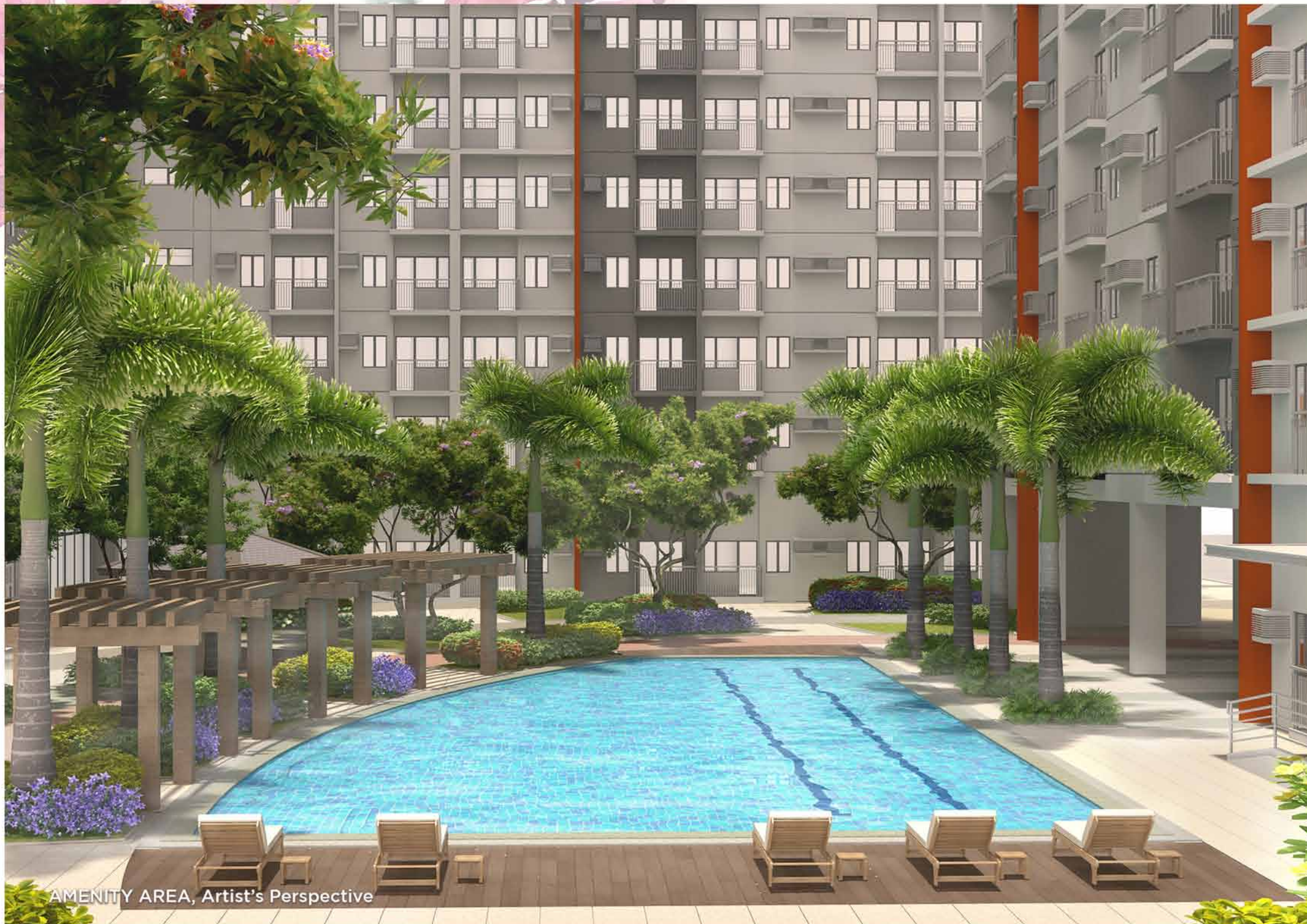
-  Gate and Guardhouse
-  Swimming Pools
-  Jogging Paths
-  Meditation Gardens
-  Amenities



GRAND LOBBY, Artist's Perspective

Springing Place to Entertain

Experience a sophisticated yet warm home where you can welcome your family and friends. Take root at Bloom Residences, where you can always find a home that you can truly be proud of!



AMENITY AREA, Artist's Perspective

Nursery for Growth

To promote fitness and wellness to its residents, Bloom Residences provides various meditation and fitness activities through its amenities.



OUTDOOR:
Jogging trail
Biking trail
Open Space for Yoga
Basketball Court
Volleyball Court
Swimming Pools
Children's Playgrounds

INDOOR:
Multi-Purpose Rooms
Clubhouse

AREAS TO RELAX:
Pocket Gardens
Landscape Areas



GRAND LOBBY, Artist's Perspective

A Grand Welcome

Expect a lush, grand welcome from Bloom Residences' luxurious hotel-like lobbies, while our generous staff will treat you like our own family.



DRESSED-UP UNIT Artist's Perspective

Cultivating Place to Recharge

Recharge in the comfort of your home after a swim or your family jog. Bloom Residences offers pleasant yet cosmopolitan units for your much-needed rest and relaxation.





DRESSED-UP UNIT, Artist's Perspective

Inspired by nature, each unit is designed to mimic lush flora while maintaining the clean lines of modern interior design, creating a natural, contemporary feel.



Gentle Caretakers

Let our warmhearted staff tend to our sprouting community so you can focus on flourishing.



Bloom Residences is a home where you can plant your roots as you start your career, grow the love for your family, care for your little buds, and eventually carve some names in the family tree.



BUILDING FACADE, Artist's Perspective

About the Building

A. What establishments and landmarks are near Bloom Residences?

MALLS/SHOPPING CENTERS AND GROCERIES

1. SM City BF Parañaque (±/-1.4km)
2. Shopwise (1.0km)
3. Uniwide Warehouse (3.2km)
4. Puregold Sucat (5.3km)
5. SM Hypermarket (6.7km)
6. SM City Sucat (6.8km)
7. Santana Grove (1.0km)

HEALTH INSTITUTIONS

1. Medical Center Parañaque (±/- 1.2km)
2. Unihealth - Parañaque Hospital and Medical Center (3.3km)
3. Hi - Precision Medical Clinic (3.0km)
4. Olivarez Hospital (5.8km)
5. The Premier Medical Center (8.2km)

PLACES OF WORSHIP

1. San Antonio de Padua Parish Church (±/-1.7km)
2. Iglesia ni Kristo - Parañaque (2.4km)
3. Mary Queen of Apostles (5.1km)

GOVERNMENT OFFICES

1. Bureau of Internal Revenue District Office - (±/-14.6km)
2. Parañaque City Police Station - (6.9km)
3. Parañaque Fire Station - (6.9km)

EDUCATIONAL INSTITUTIONS

1. Apec Schools - Sta. Rita (1.1km)
2. John Shannon Montessori (3.4km)
3. Sampaloc Site II Elementary School (2.6km)
4. LH Montessori High Inc. School (2.3km)
5. International Christian Academy (1.7km)
6. Ville St. John Academy (3.3km)
7. Escuela de San Lorenzo Ruiz (4.2km)
8. Regina Maria Montessori (1.7km)
9. Datamex Institute of Computer Technology (3.4km)
10. St. Therese De Avila School of Parañaque or STAS (4.2km)
11. PATTS College of Aeronotics (4.9km)
12. Universal College of Parañaque (5.1km)

B. What are the amenities per phase?

- a. Phase 1 - Adult and Kiddie Pool, Multi-purpose Rooms, Basketball Court, Jogging Path, Landscaped Areas, Gazebos
- b. Phase 2 - Adult and Kiddie Pool, Multi-purpose Rooms, Volleyball Court, Jogging Path, Landscaped Areas, Gazebos
- c. Phase 3 - Adult and Kiddie Pool, Multi-purpose Rooms, Badminton Court, Jogging Path, Landscaped Areas, Gazebos

C. What will be located at the Ground Floor?

- a. Phase 1 - Residential Units, Main Lobby, Multi-purpose Room

D. What is the back-up power? *Generator Set*

E. What will be the ventilation on the typical residential floors? *Naturally Ventilated*

F. What are the corridor measurements?

Hallway	
Hallway Width	±1.5 meters
Hallway Floor to Ceiling Height	±2.4 meters

G. How many elevators are there?

Phase 1	3 Passenger; 1 Service
---------	------------------------

About the Unit

A. What is the floor to floor and floor to ceiling height?

Unit	
Residential Floor to Floor Height (Living, Dining and Bedroom)	±2.95 to 3.1 meters
Residential Floor to Ceiling Height (Kitchen, Toilet and Bath)	±2.35 to 2.4 meters
Residential Floor to Ceiling Height	±2.75 meters

B. What are the unit measurements?

Unit	
Balcony Railing Height	±1.2 meters
Partition Wall Height	±2.4 meters

C. What is the allowable AC Capacity?

- a. 2 Bedroom with Balcony
 - i. Split Type ACU - 1-1.5 HP and
 - ii. Window Type ACU - 1-1.5 HP
- b. 2 Bedroom End Unit with Balcony
 - i. Split Type ACU - 1-1.5 HP and
 - ii. Window Type ACU (2) - 1-1.5 HP

D. What are the unit deliverables/finishes?

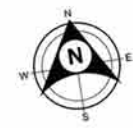
- a. Wall Finishes : Painted Cement Finish
- b. Floor Finishes : Floor Tiles
- c. Doors: Main and Bedroom - Laminated Wood Door
Toilet and Bath - Laminated Wood Door
- d. Bedroom Partition : Dry Wall Partitions
- e. Toilet and Bath
 - i. Wall - Combination of Ceramic Tiles and Painted Wall Finish
 - ii. Floor - Ceramic Tiles
 - iii. Ceiling - Painted Finish
 - iv. Fixtures - Water Closet, Lavatory, Shower Set, Soap & Tissue Holder
- f. Kitchen : Base Cabinets with Kitchen Sink
- g. Balcony (if applicable) : Floor - Ceramic tiles
Railing - Painted Metal Railing

E. What are the materials that we will be using in the unit?

Brand/Type of material may still vary unless awarded.

Other Questions

1. What is the implication of the development of additional phase to Bloom Residences?
This will result to increase in the number of residential units, parking slots, facilities and amenities which shall be registered under one condominium corporation.
2. What does it mean when the phases are registered under one Condominium Corporation?
Amenities, facilities and common areas of Bloom Residences Phase 1, Phase 2 and Phase 3 shall be shared by all residents.
3. When is the project completion?
May 2022 (estimated)
4. What is the condo dues rate?
May still vary depending on the projected operational cost of the project during turnover.
5. What is the rental rate?
May still vary on market value at the time of completion.



AMENITY VIEW

LAGUNA DE BAY VIEW

ALABANG CITY VIEW

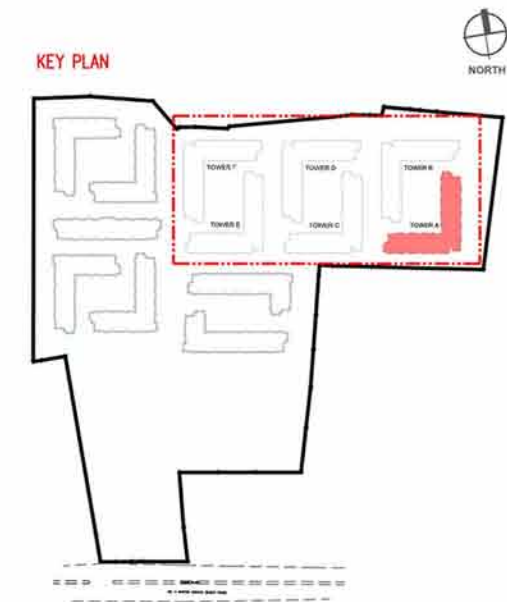
*DISCLAIMER: FURNITURE AND APPLIANCES ARE NOT INCLUDED

LEGENDS:

2-BEDROOM UNIT W/ BALCONY

- 2 BEDROOM UNIT W/ BALCONY
- 2 BEDROOM END UNIT W/ BALCONY

KEY PLAN



Tower A

2nd Floor Plan





*DISCLAIMER: FURNITURE AND APPLIANCES ARE NOT INCLUDED



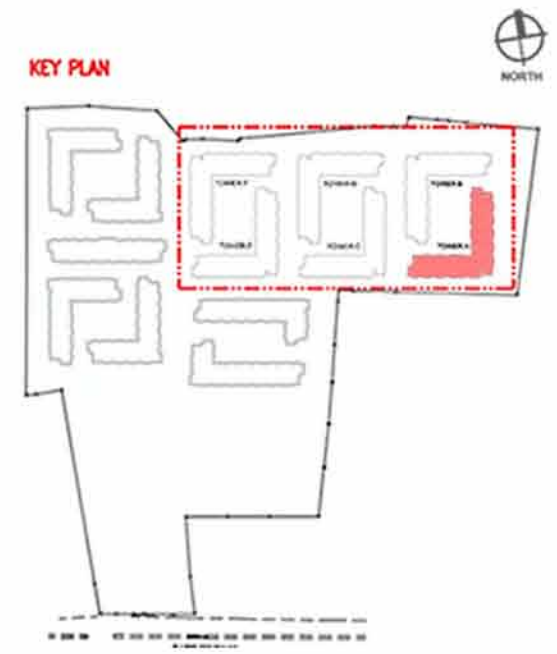
AMENITY VIEW

LAGUNA DE BAY VIEW

ALABANG CITY VIEW

LEGENDS:

- 2-BEDROOM UNIT W/ BALCONY
- 2 BEDROOM INNER UNIT W/ BALCONY
- 2 BEDROOM END UNIT W/ BALCONY



Tower A

3rd-15th Typical Floor Plan





*DISCLAIMER: FURNITURE AND APPLIANCES ARE NOT INCLUDED



AMENITY VIEW

LAGUNA DE BAY VIEW

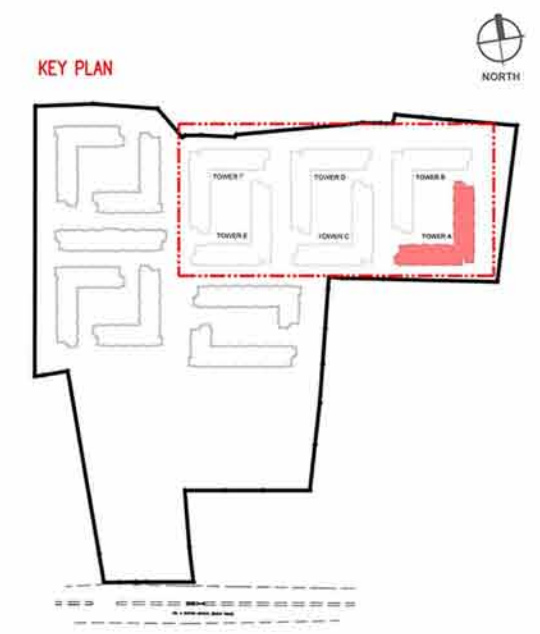
ALABANG CITY VIEW

LEGENDS:

2-BEDROOM UNIT W/ BALCONY

2 BEDROOM UNIT W/ BALCONY

2 BEDROOM END UNIT W/ BALCONY



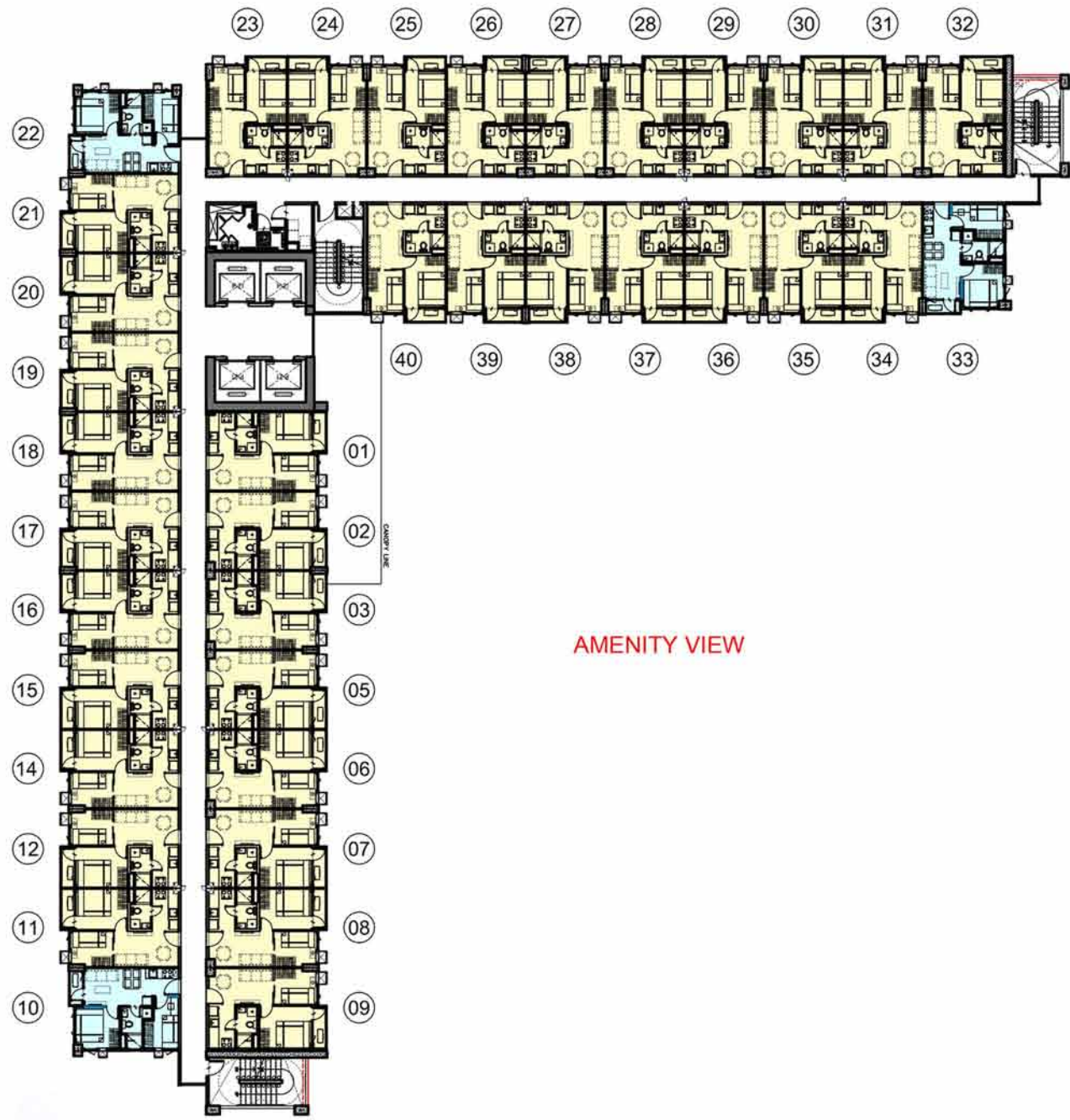
Tower A

16th Floor Plan





MAKATI CITY / MALL OF ASIA CBD VIEW



AMENITY VIEW

AMENITY VIEW

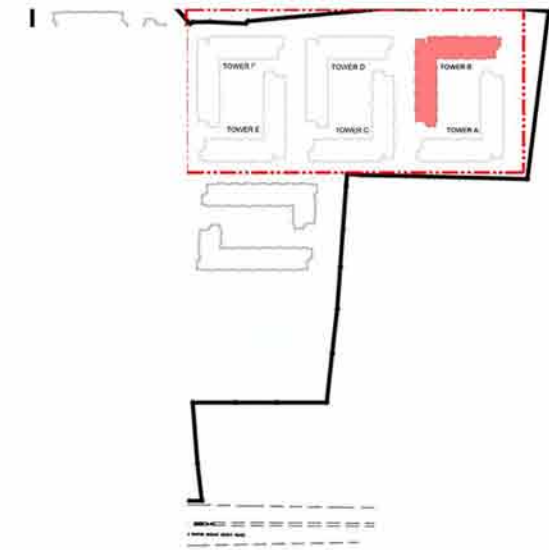
*DISCLAIMER: FURNITURE AND APPLIANCES ARE NOT INCLUDED

LEGENDS:

2-BEDROOM UNIT W/ BALCONY

2 BEDROOM UNIT W/ BALCONY

2 BEDROOM END UNIT W/ BALCONY

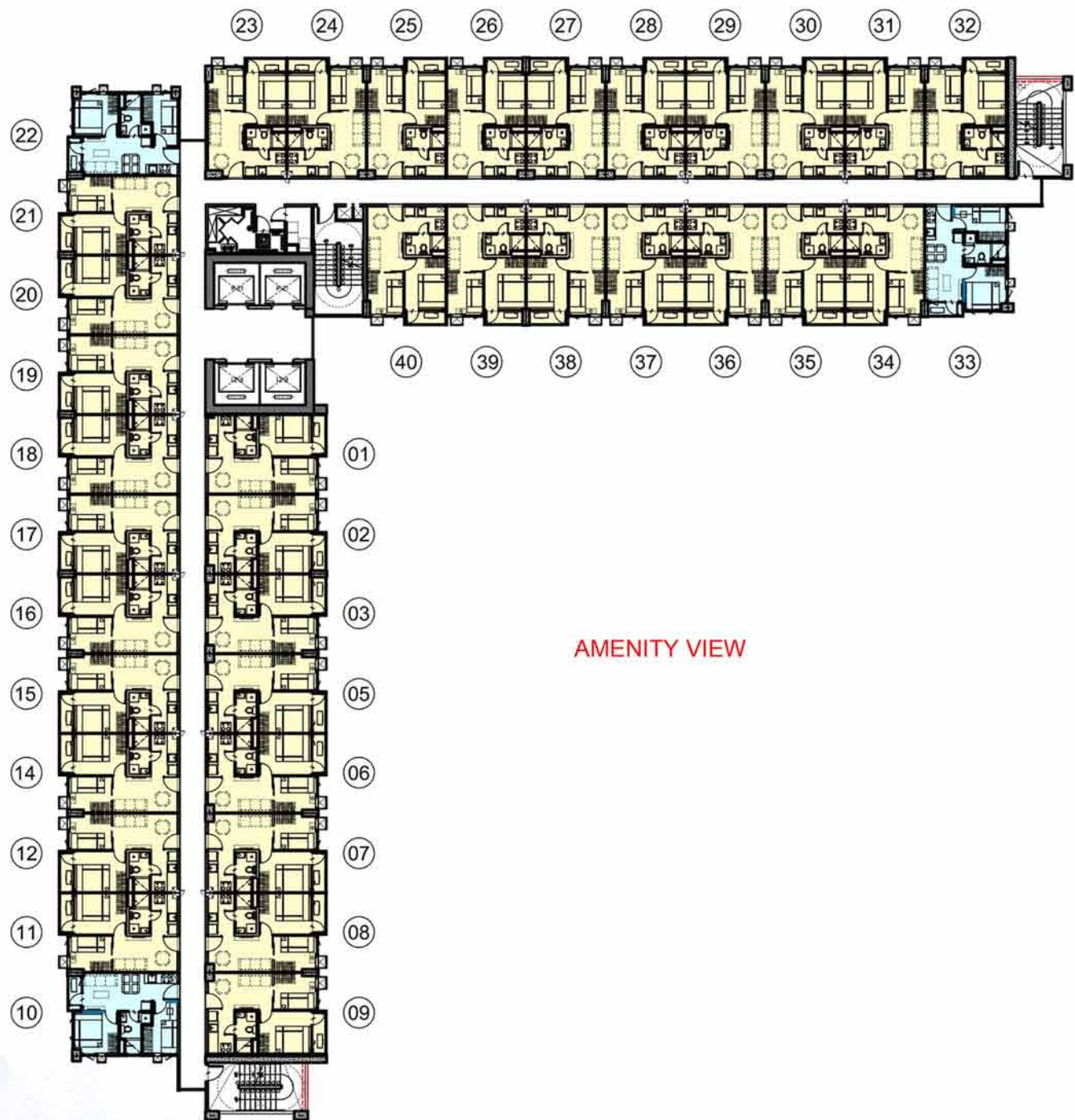


Tower B

2nd Floor Plan



MAKATI CITY / MALL OF ASIA CBD VIEW



AMENITY VIEW

AMENITY VIEW

*DISCLAIMER: FURNITURE AND APPLIANCES ARE NOT INCLUDED

LEGENDS:

2-BEDROOM UNIT W/ BALCONY

2 BEDROOM UNIT W/ BALCONY

2 BEDROOM END UNIT W/ BALCONY

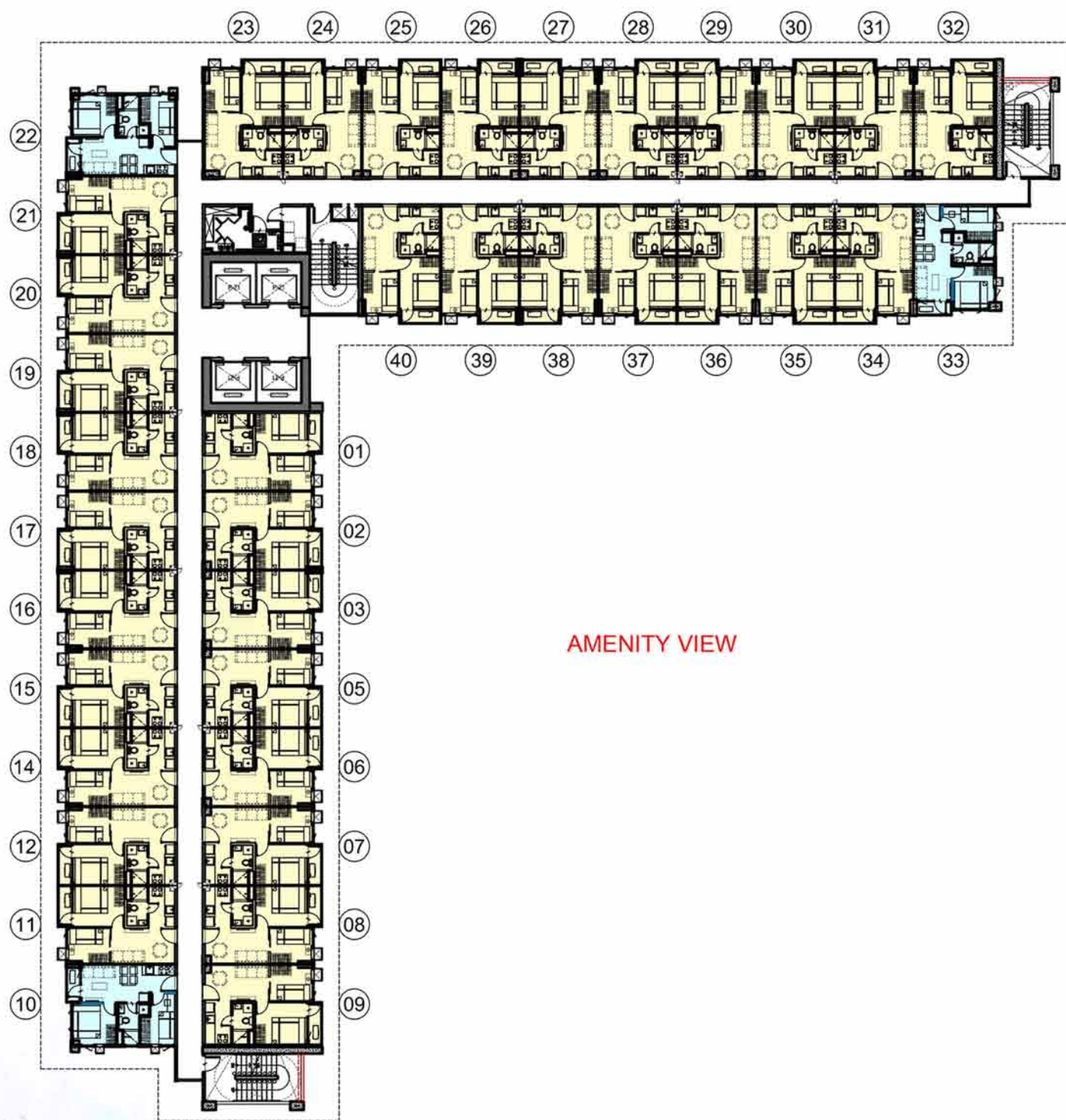


Tower B

3rd-15th Typical Floor Plan



MAKATI CITY / MALL OF ASIA CBD VIEW



AMENITY VIEW

AMENITY VIEW

*DISCLAIMER: FURNITURE AND APPLIANCES ARE NOT INCLUDED

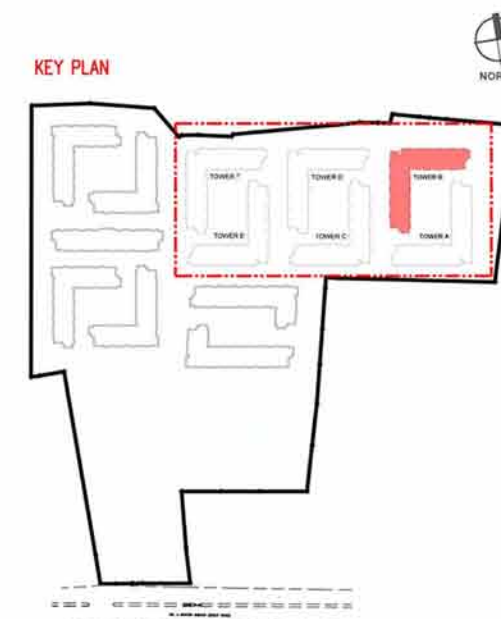
LEGENDS:

2-BEDROOM UNIT W/ BALCONY

2 BEDROOM UNIT W/ BALCONY

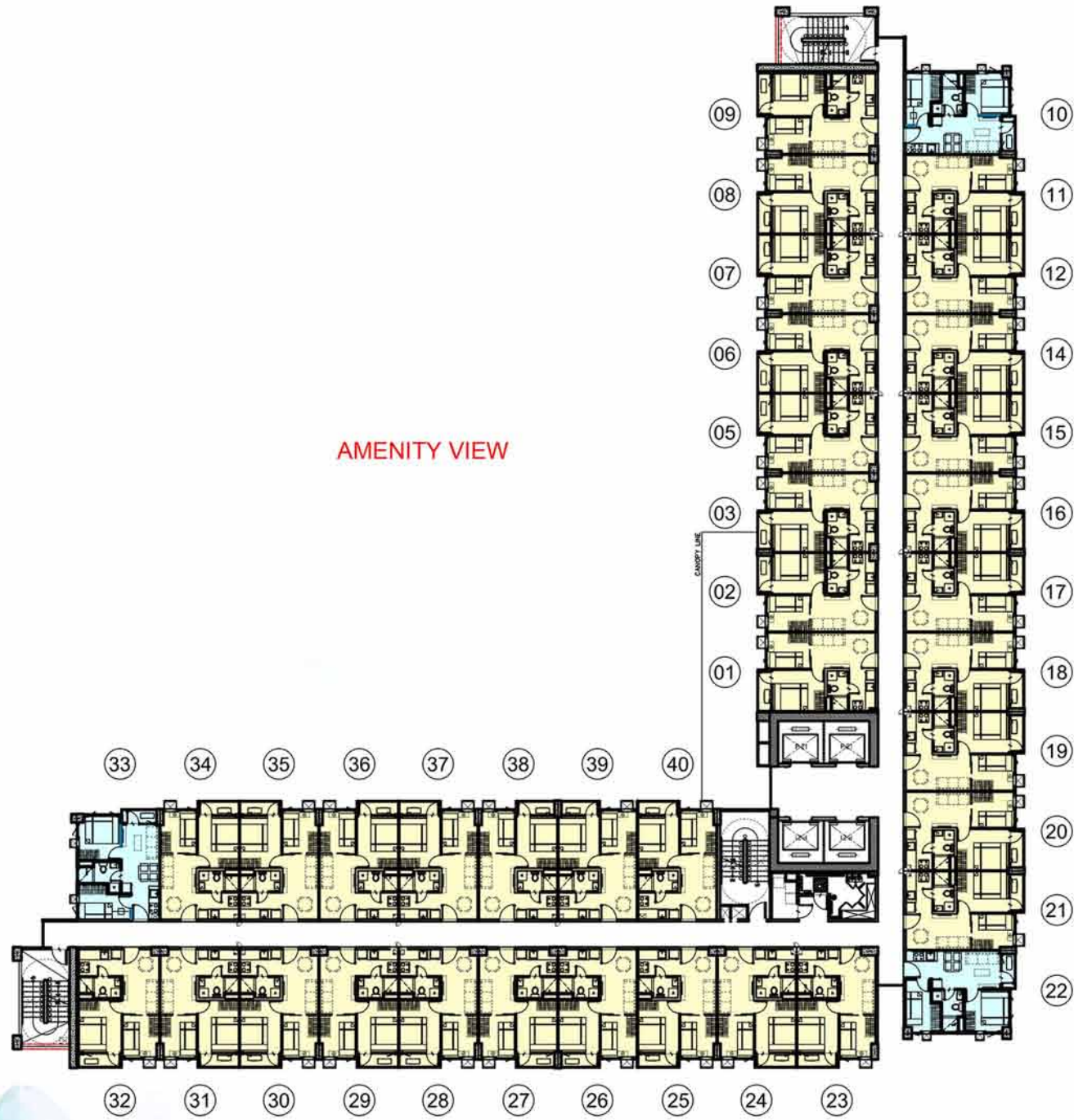
2 BEDROOM END UNIT W/ BALCONY

KEY PLAN



Tower B

16th Floor Plan



AMENITY VIEW

ALABANG CITY VIEW



AMENITY VIEW

*DISCLAIMER: FURNITURE AND APPLIANCES ARE NOT INCLUDED

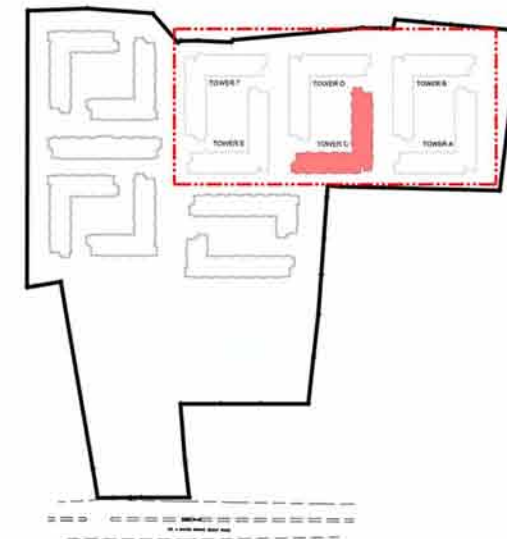
LEGENDS:

2-BEDROOM UNIT W/ BALCONY

2 BEDROOM UNIT W/ BALCONY

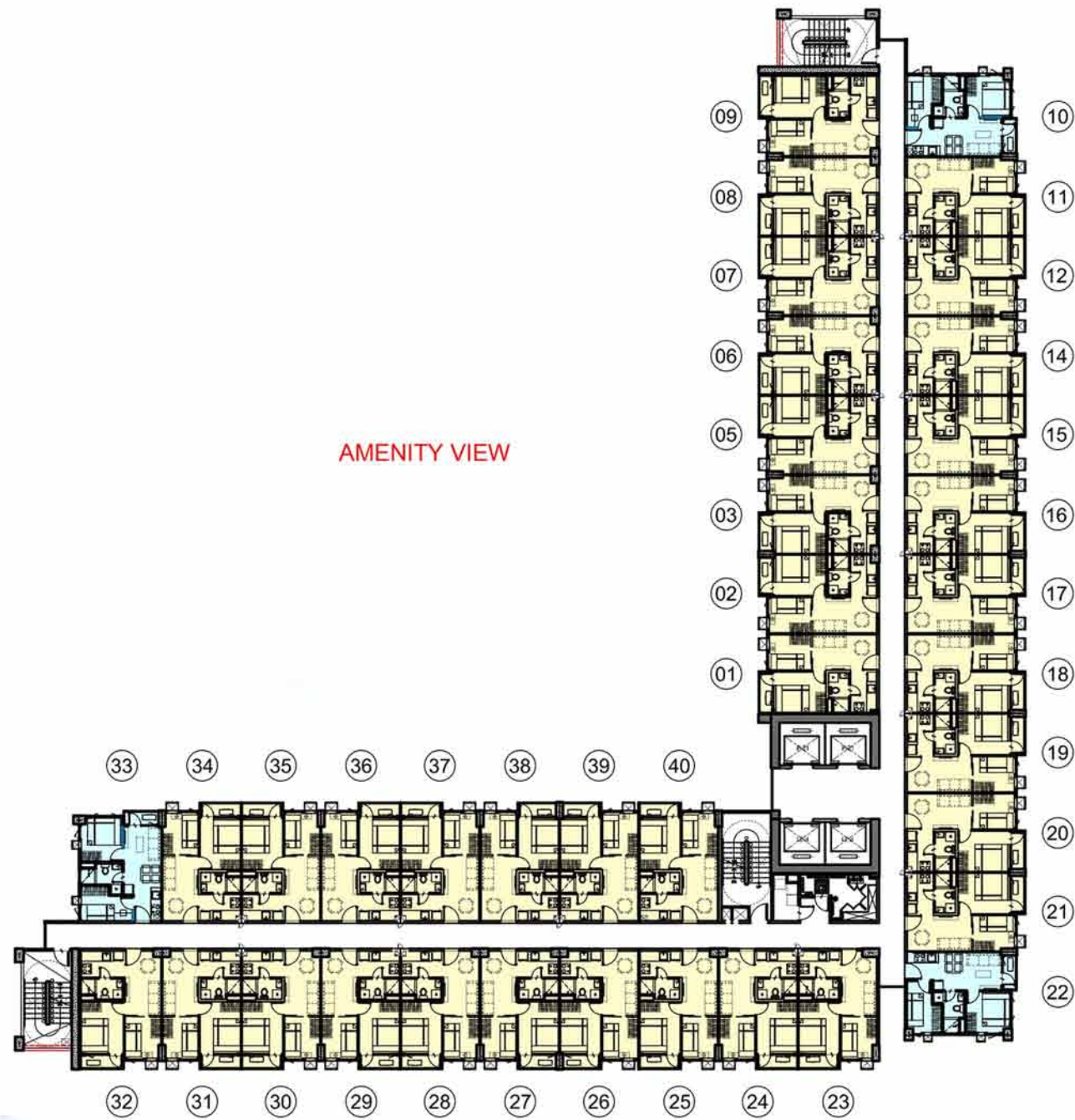
2 BEDROOM END UNIT W/ BALCONY

KEY PLAN



Tower C

2nd Floor Plan



AMENITY VIEW

ALABANG CITY VIEW



AMENITY VIEW

*DISCLAIMER: FURNITURE AND APPLIANCES ARE NOT INCLUDED

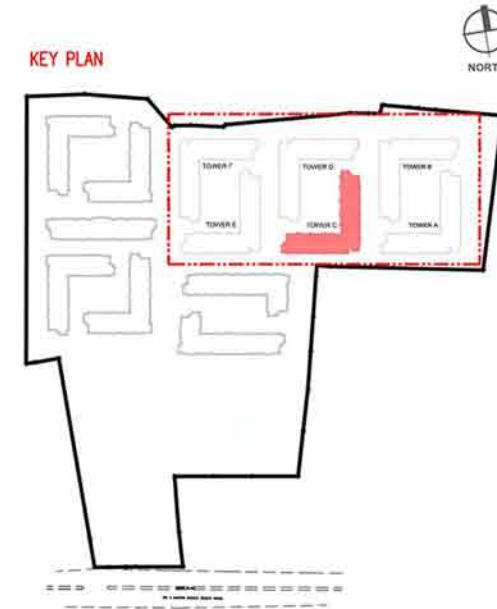
LEGENDS:

2-BEDROOM UNIT W/ BALCONY

2 BEDROOM UNIT W/ BALCONY

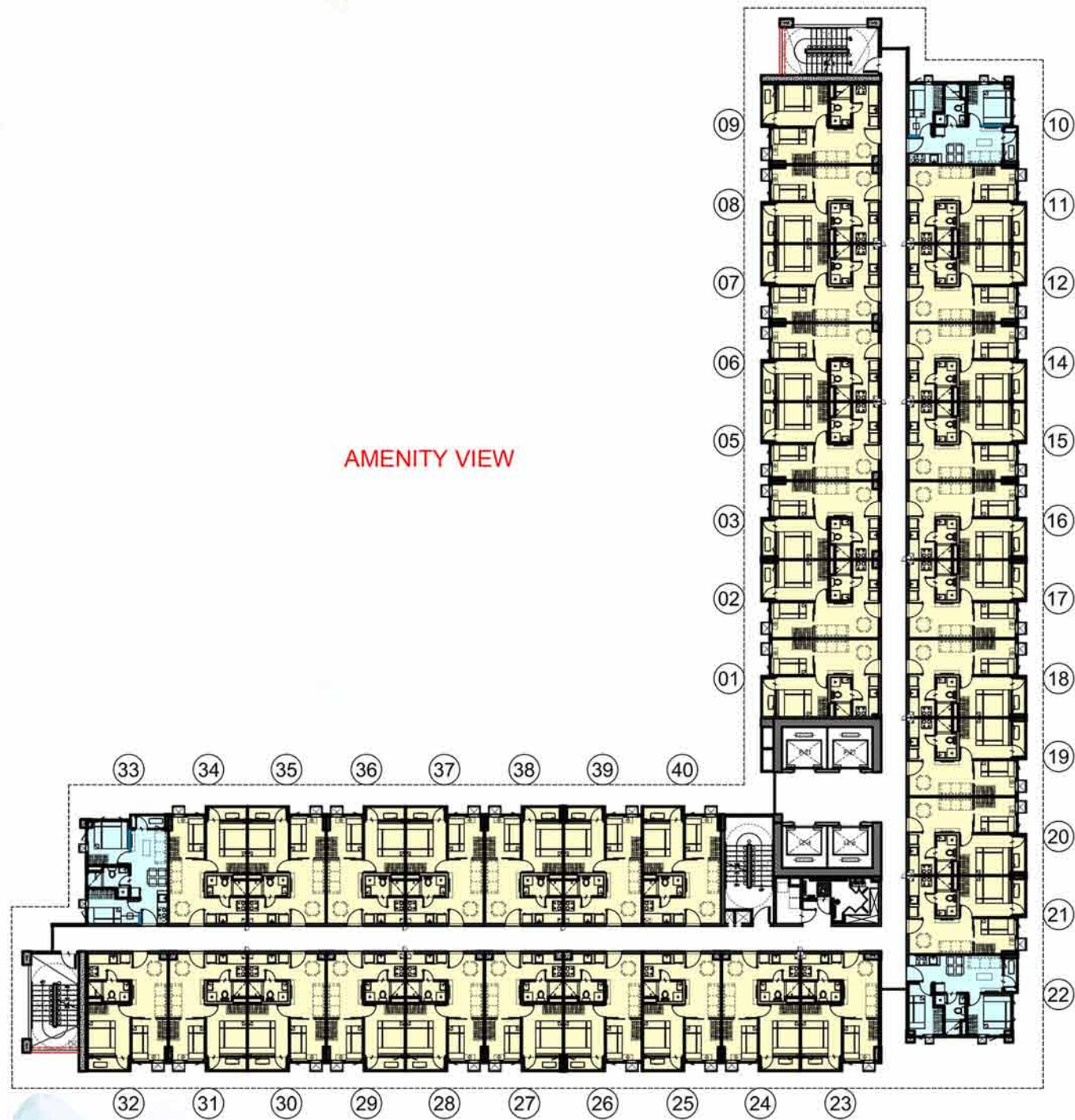
2 BEDROOM END UNIT W/ BALCONY

KEY PLAN



Tower C

3rd-15th Typical Floor Plan

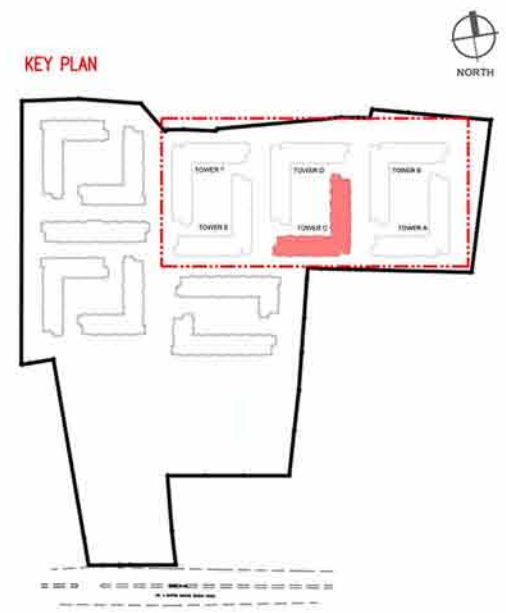


*DISCLAIMER: FURNITURE AND APPLIANCES ARE NOT INCLUDED

AMENITY VIEW

LEGENDS:

- 2-BEDROOM UNIT W/ BALCONY
- 2 BEDROOM UNIT W/ BALCONY
- 2 BEDROOM END UNIT W/ BALCONY



Tower C

16th Floor Plan



**2 Bedroom Unit with Balcony
(Suggested furniture Layout)**
± 32.51 sqm



**2 Bedroom Unit with Balcony
(Suggested furniture Layout)**
± 32.51 sqm



**2 Bedroom Unit with Balcony
(Suggested furniture Layout)**
± 32.51 sqm



**2 Bedroom Unit with Balcony
(Suggested furniture Layout)**
± 32.51 sqm



**2 Bedroom Unit with Balcony
(Suggested furniture Layout)**
± 32.53 sqm



**2 Bedroom Unit with Balcony
(Suggested furniture Layout)**
± 33.17 sqm



**2 Bedroom End Unit with Balcony
(Suggested furniture Layout)**

± 31.96 sqm



**2 Bedroom Unit with Balcony
(Suggested furniture Layout)**

± 34.10 sqm



**2 Bedroom Unit with Balcony
(Suggested furniture Layout)**

± 32.86 sqm



**2 Bedroom Unit with Balcony
(Suggested furniture Layout)**

± 33.19 sqm